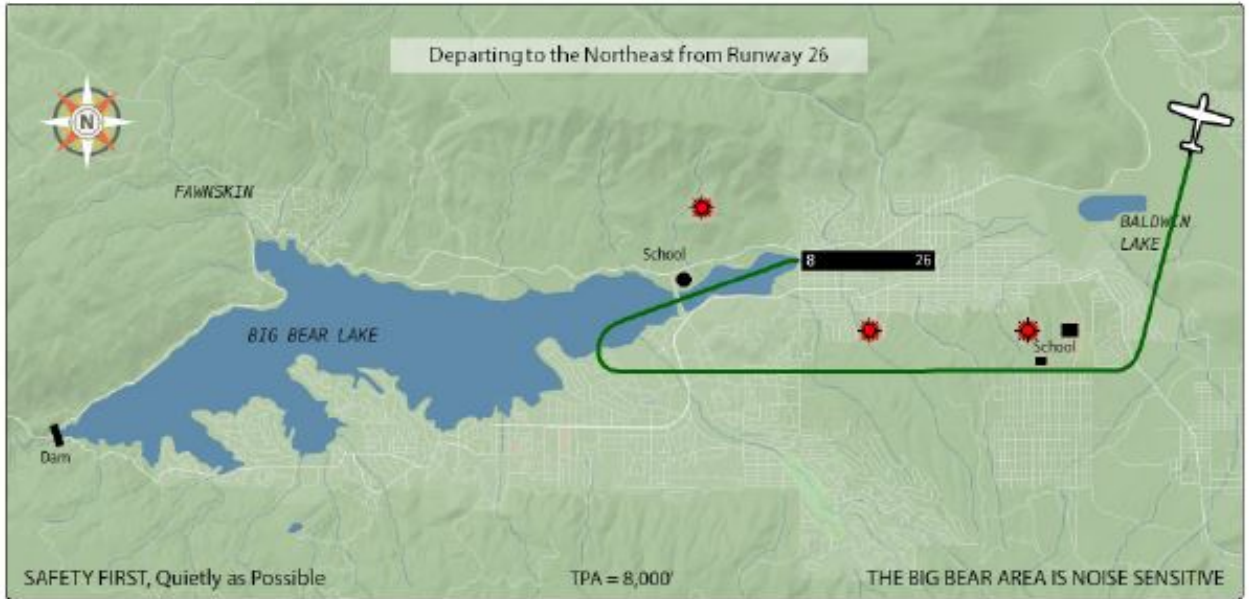


Big Bear Airport (L35)

N 34 15'50" W116 51'22"

Field Elevation: 6752' MSL



| ARRIVALS | | | | FREQUENCIES | | DEPARTURES | | | |
|---|---|----|----|-------------------------------|------------------------|---|---|----|----|
| Runway 8 from | W | NW | NE | AWOS-3 | 135.925 (909) 585-4033 | Runway 8 to | W | NW | NE |
| Runway 26 from | W | NW | NE | Unicom | 122.725 | Runway 26 to | W | NW | NE |
| Aircraft landing Runway 08 please avoid the round school and playground on final approach; stay south of school over water until you pass the school. | | | | SoCal App | | Departing aircraft Runway 26 execute 10° left turn at END OF RUNWAY. AVOID SCHOOL (round building) and PLAYGROUNDS. | | | |
| | | | | 127.00 (West bound) | | | | | |
| | | | | LA Center 126.35 (East bound) | | | | | |

Big Bear Airport (L35)

N 34 15'50" W116 51'22"

Field Elevation: 6752' MSL



| ARRIVALS | | | | FREQUENCIES | | DEPARTURES | | | |
|---|---|----|----|-------------------------------|------------------------|---|---|----|----|
| Runway 8 from | W | NW | NE | AWOS-3 | 135.925 (909) 585-4033 | Runway 8 to | W | NW | NE |
| Runway 26 from | W | NW | NE | Unicom | 122.725 | Runway 26 to | W | NW | NE |
| Aircraft landing Runway 08 please avoid the round school and playground on final approach; stay south of school over water until you pass the school. | | | | SoCal App | | Departing aircraft Runway 08 execute a 10° left turn at END OF RUNWAY. Do not overfly schools on departure. | | | |
| | | | | 127.00 (West bound) | | | | | |
| | | | | LA Center 126.35 (East bound) | | | | | |